

Mastopexy

Professor J D Frame
FRCS, FRCS (Plast.)

Consultant Plastic
and
Aesthetic Surgeon

Mastopexy

Consultations at:
Springfield Hospital,
Chelmsford, Essex

Secretary:-Mrs Lesley Tarling
Springfield Hospital
Lawn Lane
Springfield
Chelmsford
Essex
CM1 7GU

Phone: 01245 460981
Fax: 01245 460991
Email: info@professorjamesframe.co.uk
www.professorjamesframe.co.uk
www.ukaaps.org

Tel: 01245 460981

© J D Frame
September 2019

Professor J D Frame
FRCS, FRCS (Plast.)

Mastopexy (Breast Lift)

Droopiness of the breast is a common legacy of motherhood, nursing and the force of gravity taking their toll. The effect of pregnancy and a distension of the breasts with milk causes the fibrous bands which support the breasts in their youthful shape to break down and the skin to stretch. With the subsequent shrinking the unsupported breasts settle into the stretched skin and gravity pulls them down further. Putting on weight and then losing it can have the same effect. So too does the ageing process, which is why women dislike the appearance of their droopy breasts.

What can be done?

Whilst it is not possible to (surgically) recreate the natural supporting structure of the breast, it is possible to reshape the breast into one which looks more youthful and feels more firm. The operation is called a Mastopexy. Pleats of surplus skin are removed from underneath the breast, the breast itself is remodelled into a tighter cone and the nipples are repositioned at a higher level so that they lie at the points of the tightened breasts. Mastopexy can also reduce the size of the areola (the darker skin surrounding the nipple). If the breasts are too small as well as droopy, their size can be increased during the operation by placing silicone breast implants underneath the tightened breasts. The best results are achieved in women with small sagging breasts though breasts of any size can be lifted. The results may not last as long with heavy breasts. Many women seek mastopexy when their families are complete so if you are planning to have further children it may be a good idea to postpone the operation for though there are no risks for future pregnancy and mastopexy does not usually interfere with breast feeding, pregnancy is likely to stretch the breast again and reduce the effectiveness of the procedure.

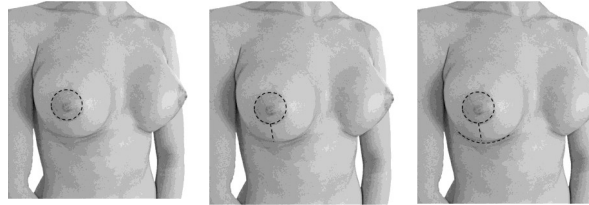
What are the consequences?

This is a good operation to improve the appearance of droopy breasts but you would be left with scars, possibly some numbness of your nipples and you may not be able to breast feed again. Mastopexy can be carried out by a number of different techniques and the scars will differ accordingly. The most common technique involving scars are illustrated below. It may be possible for the operation to be performed with less scars and your surgeon will discuss the possibility of this with you. Usually these scars are fine but they are not invisible and could be noticed by others for example, if you were topless on the beach.

What are the limitations?

Because it is not possible to recreate the natural attachment of the breast to the tissues underneath, a mastopexy

alone will not greatly increase the fullness of the breasts above the nipples. Fullness above the nipples can be achieved, however, by increasing the size of the breasts with silicone implants. The extra weight of the silicone implants may accelerate the return of the droopiness of the breasts and in any event there is a tendency for the breast to sink downwards as time goes by. You can lessen the rate at which this happens by supporting your breasts in a bra as much as possible.



Different types of scar lines after a Mastopexy

What are the risks?

As with any major operation under general anaesthetic, there is a small risk of chest problems particularly if you are a smoker and a small risk of thrombosis of veins in your legs, particularly if you are taking a contraceptive pill. In addition there is a small risk of one or more of the following complications.

Rarely heavy bleeding from the broken blood vessels can occur after the operation, which requires treatment in theatre under another anaesthetic. Occasionally, infection (usually from germs that are lying dormant in the ducts of the breast) can cause part of the wounds to break down which prolongs the healing period and can affect the outcome of the final scars. You should be given antibiotics as a prophylaxis.

Some people have an inborn tendency for scars to stretch and some people produce scars which remain thick, red and irritable for a long time.

If silicone implants are used you will need to refer to the leaflet on breast augmentation which will discuss the issue of breast implants and the potential complications in much more detail.

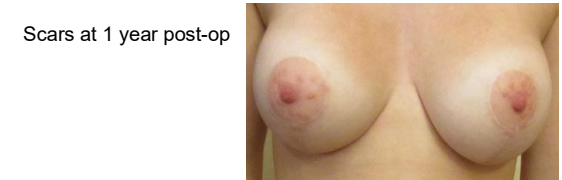
What you can expect at the time of the operation?

This surgery is normally carried out under a general anaesthetic and will often involve an overnight stay in hospital depending on the extent and size of the procedure. Your surgeon will need to mark the breast while you are sitting. You will be given painkillers for the discomfort you experience in the first few days. Your surgeon will encourage you to wear a firm bra following surgery, which will continue if the stitches are removed some 10 days to 2 weeks later. Mostly, the superficial wounds are glued. You should refrain from strenuous physical exercise including swimming, for a month and you will probably require at least two weeks off work. Over the next 6 to 12 months the scars will gradually fade from red to pale. You will be advised on the use of silicone gels for scar control. Your surgeon will make every effort to make your scars as inconspicuous as possible but it is important to remember that the scars are extensive and permanent. It is not possible to reshape droopy breasts without significant scars, for although the use of breast implants

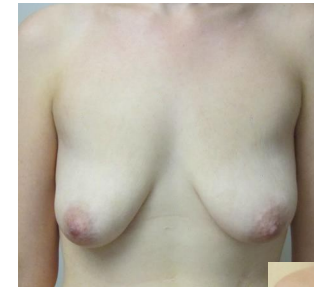
alone will improve the fullness, they will not deal with any significant drooping. Breast lift will not last forever and the effects of gravity, pregnancy and weight gain will take their toll, as will time.



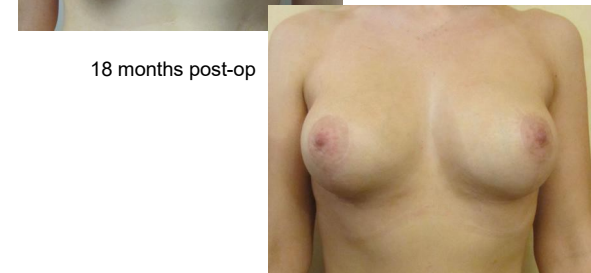
Scars at 3 months post-op



Scars at 1 year post-op



Pre-op



18 months post-op

Secretary:-Mrs Lesley Tarning
Springfield Hospital
Lawn Lane
Springfield
Chelmsford
Essex
CM1 7GU

Phone: 01245 460981

Fax: 01245 460991

Email: info@professorjamesframe.co.uk